

BALL NUT PITCH CIRCLE DIAMETER COMPARATORS

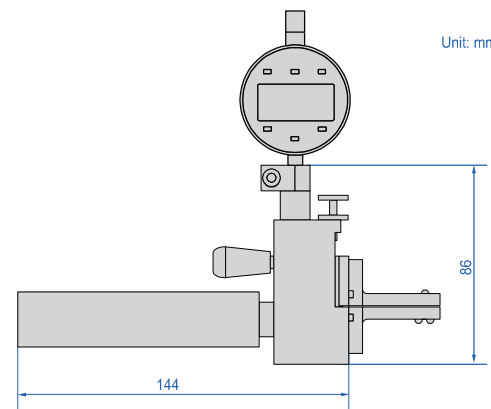
PROBE AND CALIBRATION RING GAUGE
NEED TO BE CUSTOMIZED ACCORDING TO THE WORKPIECE

DATA
OUTPUT

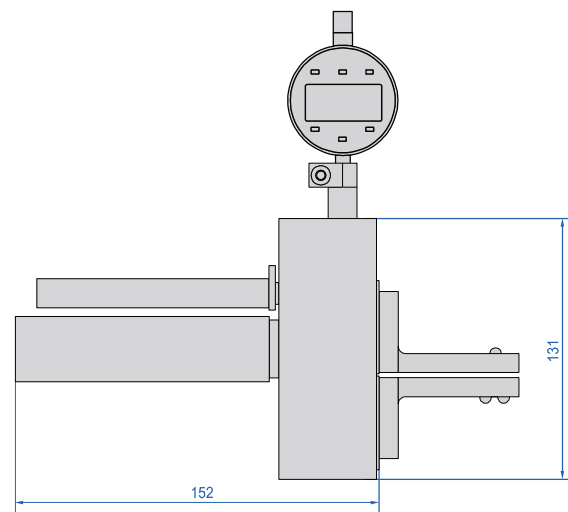


2678-20

- Measuring the pitch circle diameter of ball nuts
- Probe and calibration ring gauge need to be customized according to workpiece
- Adjustable resolution: 0.0005mm/0.00002"
0.001mm/0.00005"
0.01mm/0.0005"
- Digital indicator uses absolute encoder, the original data remains after power off
- Digital indicator button function: data output, tolerance, data preset, data hold, measuring direction change, max./min./TIR, power off time, on/off, mm/inch, resolution adjustment
- Digital indicator uses rechargeable battery, for 24 hours continuous working
- Optional accessory: wireless transmitter(code 7315-60, receiver is needed)



2678-20



2678-50

Code	Range	Contact point opening range	Effective stroke of anvil	Accuracy*	Repeatability
2678-20	6-20mm	6mm	0.1mm	0.005mm	0.001mm
2678-50	20-50mm	15mm	0.1mm	0.005mm	0.001mm

*When under the effective stroke of the anvil, the accuracy can reach 0.005mm